

# Heading home?

**KEEP THESE RULES IN YOUR MIND!**



**Mask up**



**Ask family members  
to keep the door open**



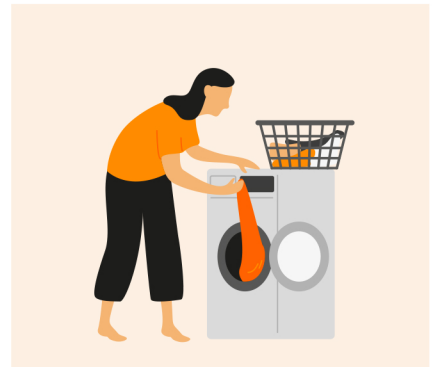
**Sanitize your hands  
at entrance**



**Sanitize your bags  
and shoes**



**Discard disposable  
masks in a covered bin**



**Wash clothes and the mask  
you wore. Take a bath**



**Wear  
a mask**



**Practice  
social distancing**



**Wash  
hands often**



**Cover your  
cough & sneeze**



**Call the  
helpline, if sick**

**#BeeSafe**

An initiative by **Be the Bee**