

# Heading home?

KEEP THESE RULES IN YOUR MIND!



**Mask up**



**Ask family members to keep the door open**



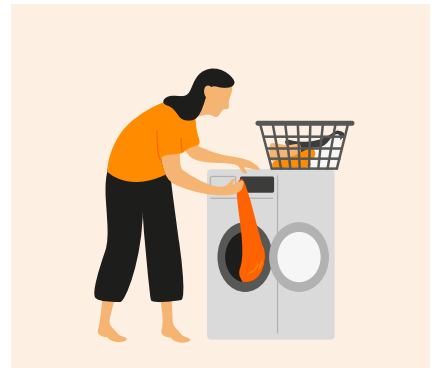
**Sanitize your hands at entrance**



**Sanitize your bags and shoes**



**Discard disposable masks in a covered bin**



**Wash clothes and the mask you wore. Take a bath**



**Wear a mask**



**Practice social distancing**



**Wash hands often**



**Cover your cough & sneeze**



**Call the helpline, if sick**

**#BeeSafe**

An initiative by **Be the Bee**